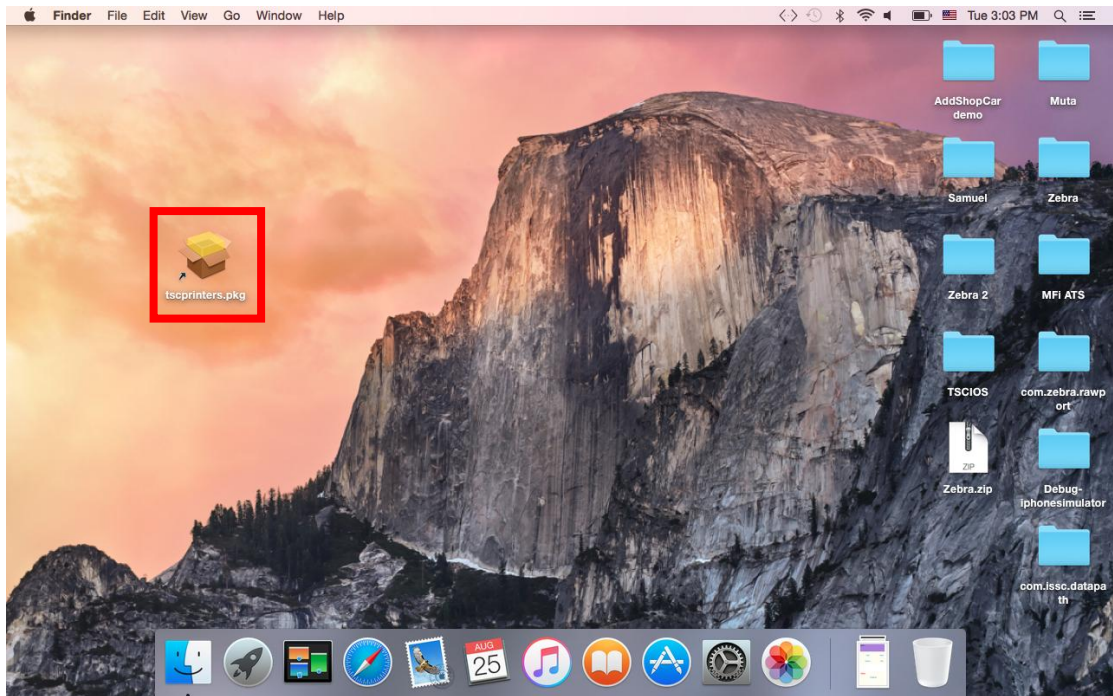
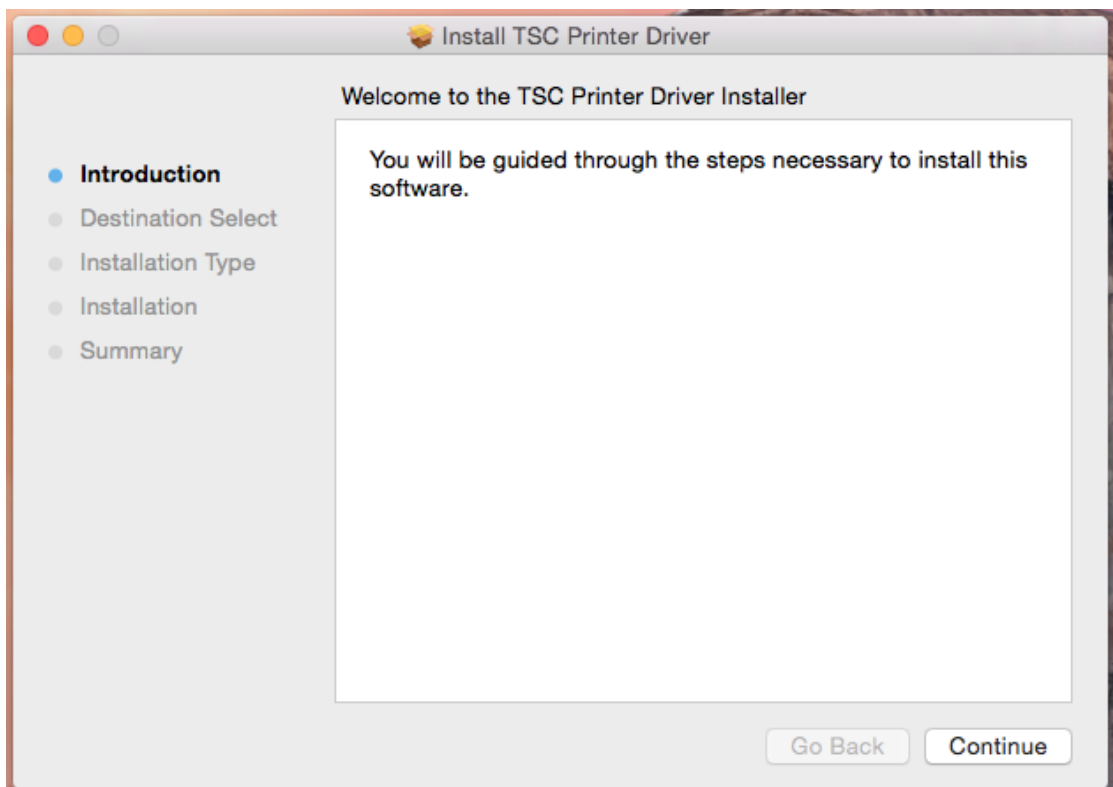


TSC MAC Driver Installation Guide

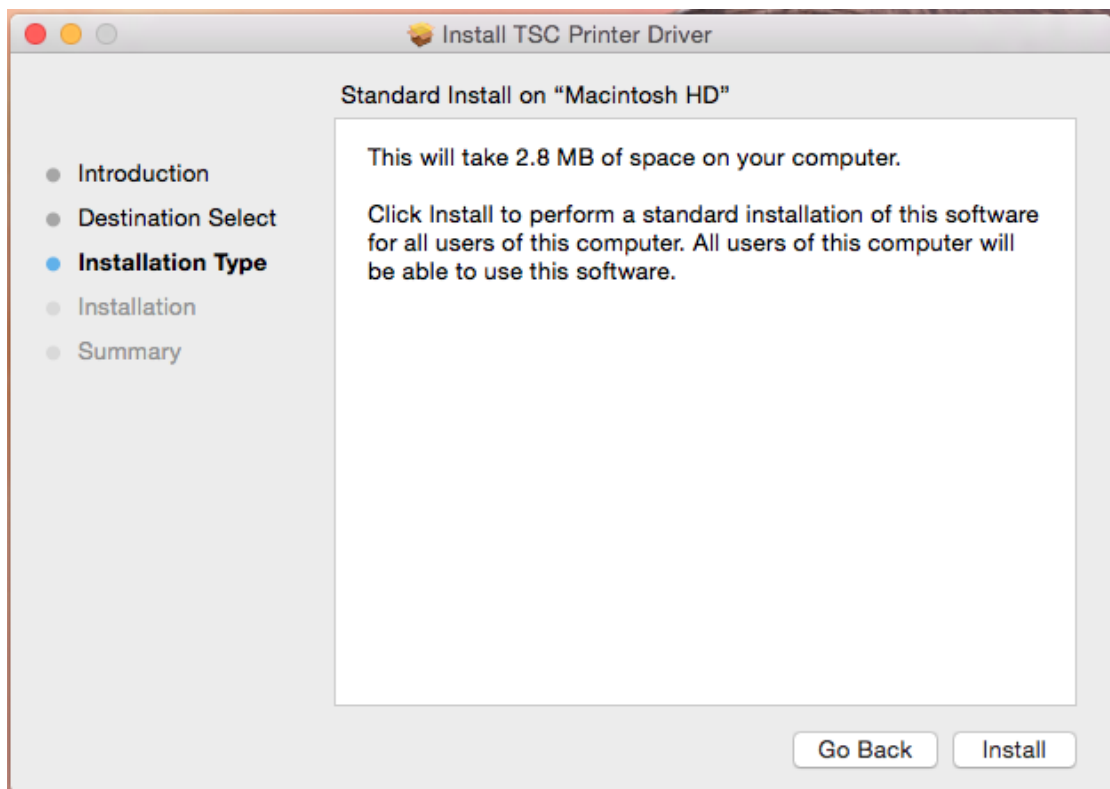
1. Double click the tscprinters.pkg to install the MAC driver.



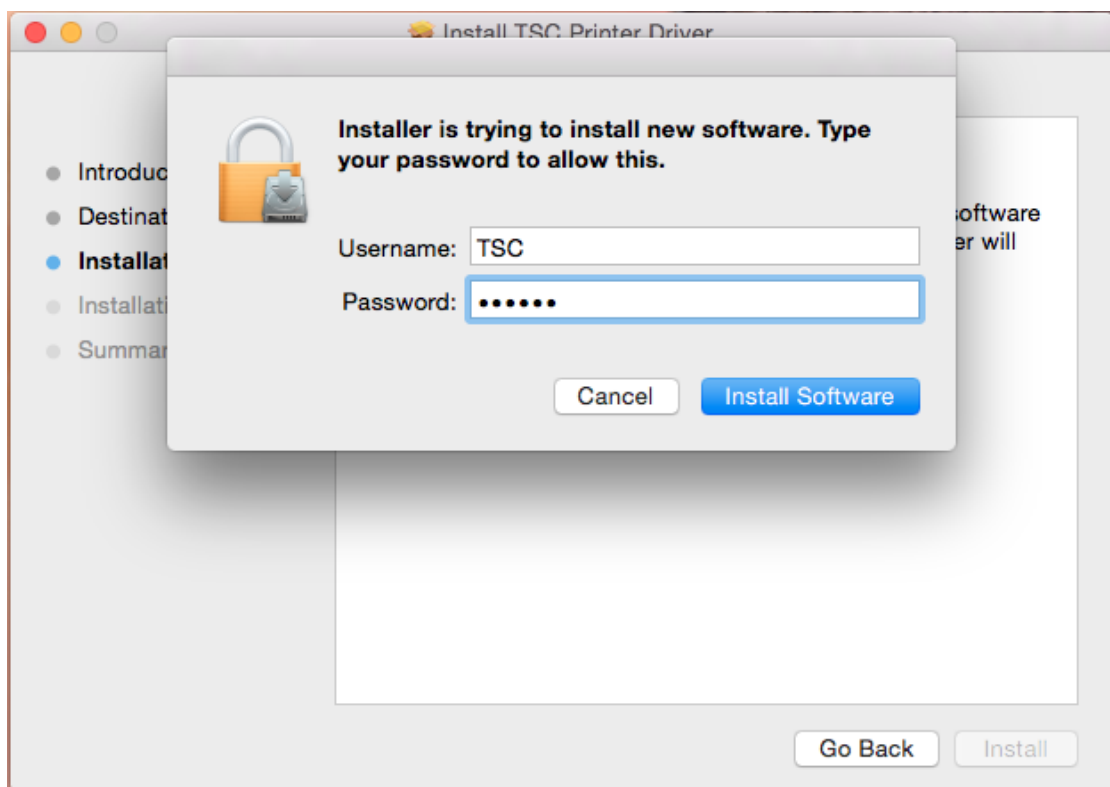
2. Click the Continue button.



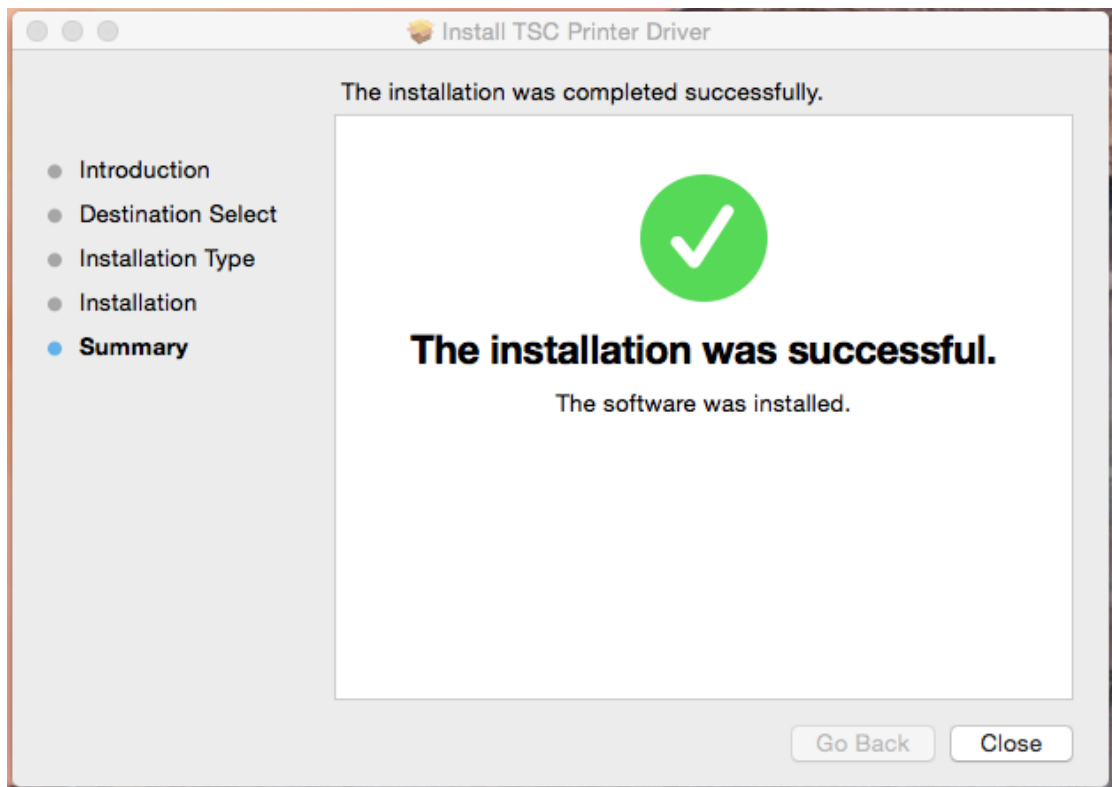
3. Click the Install button.



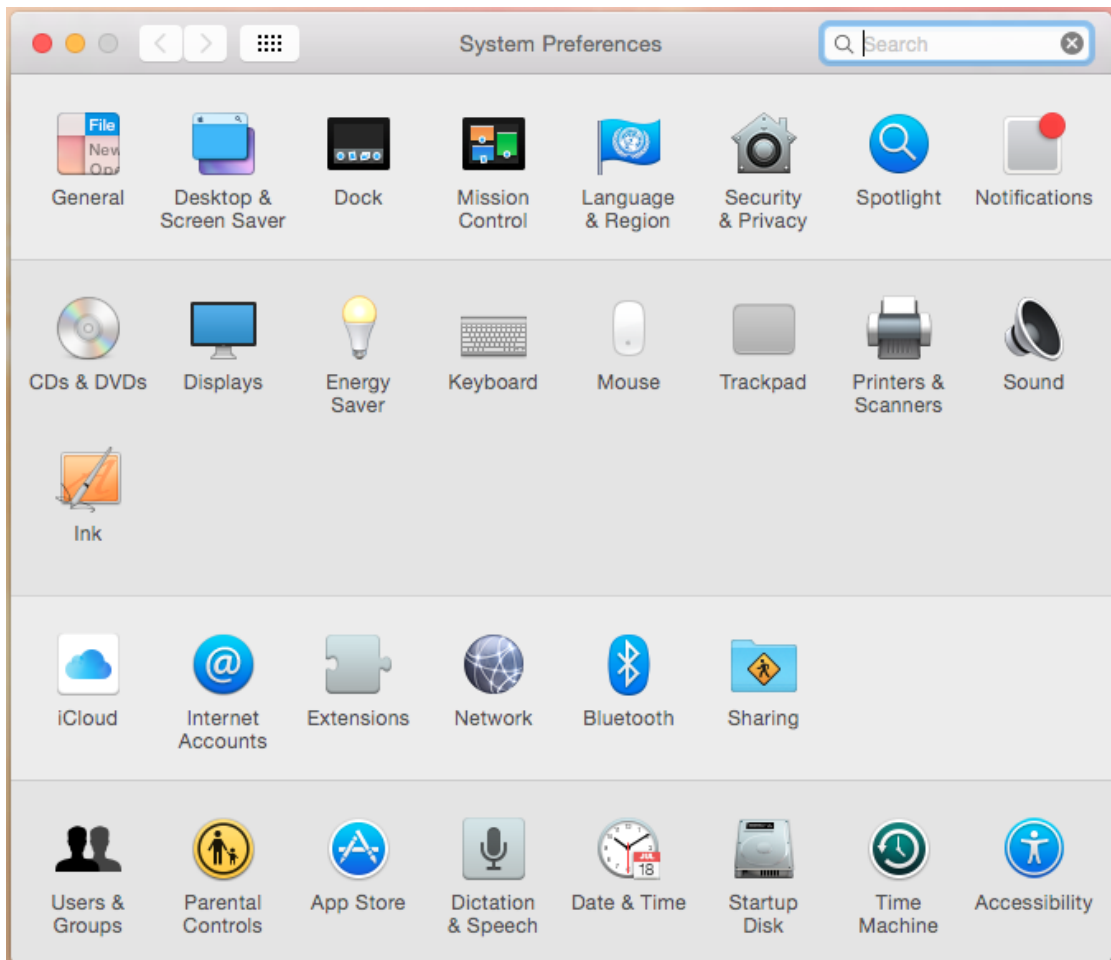
4. Input the Username and Password, and click the Install Software button.



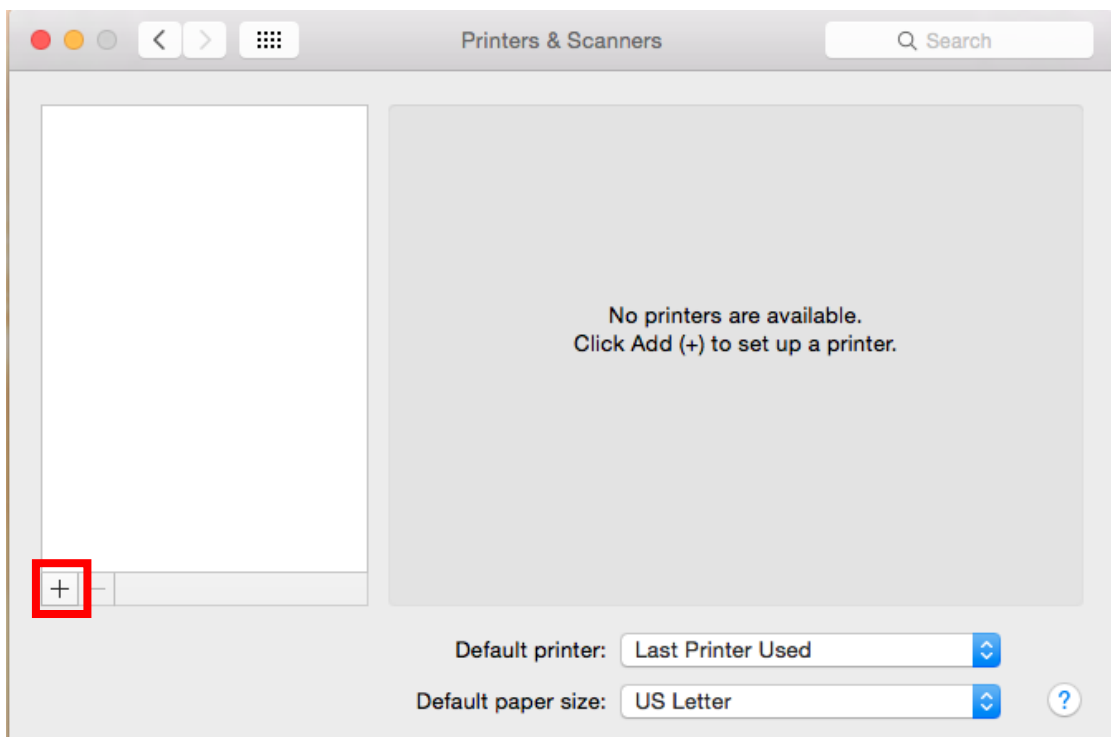
5. Done.



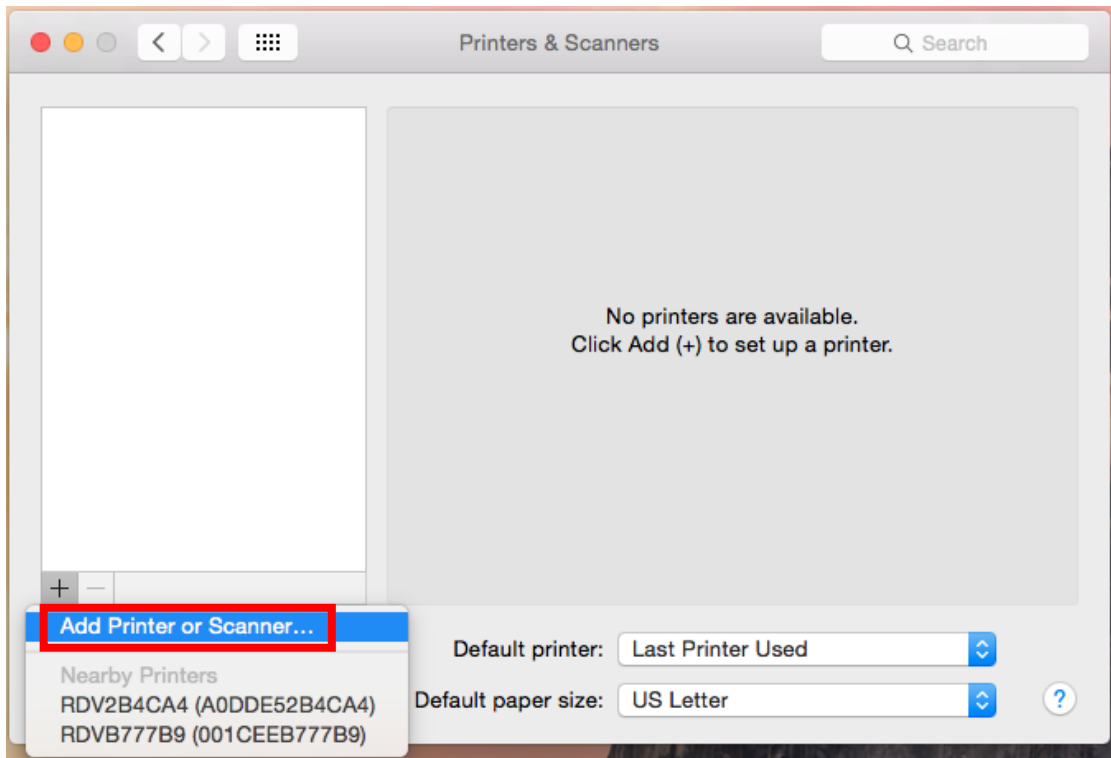
6. Click the Printers and Scanners icon.



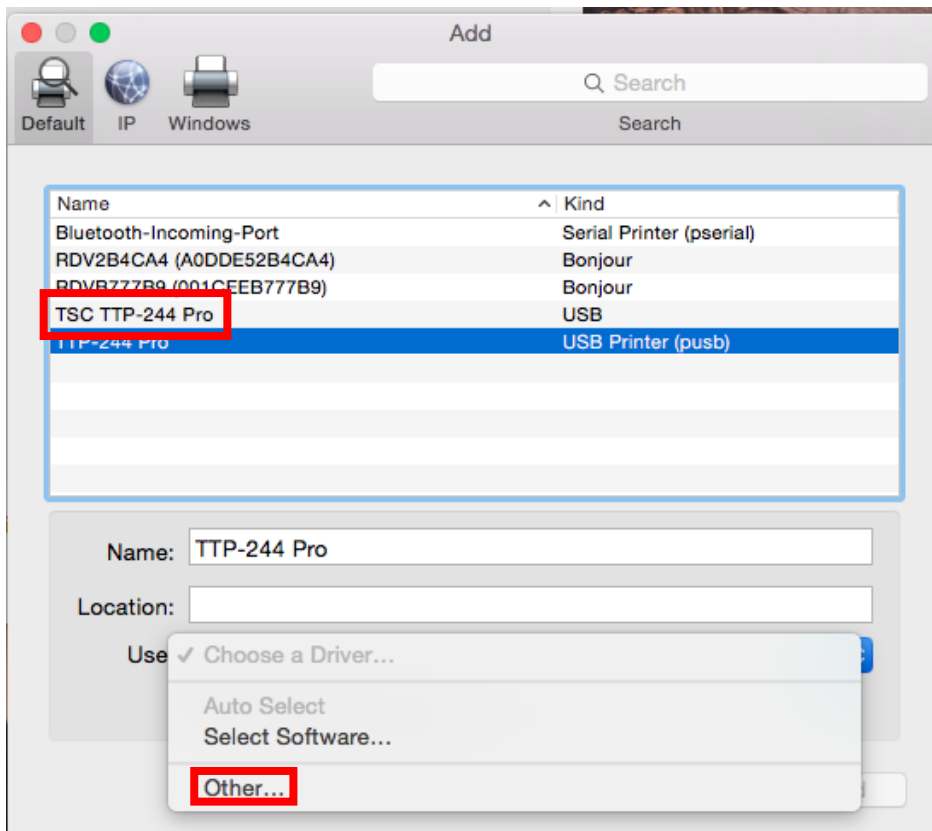
7. Click the Add (+) to set up a printer.



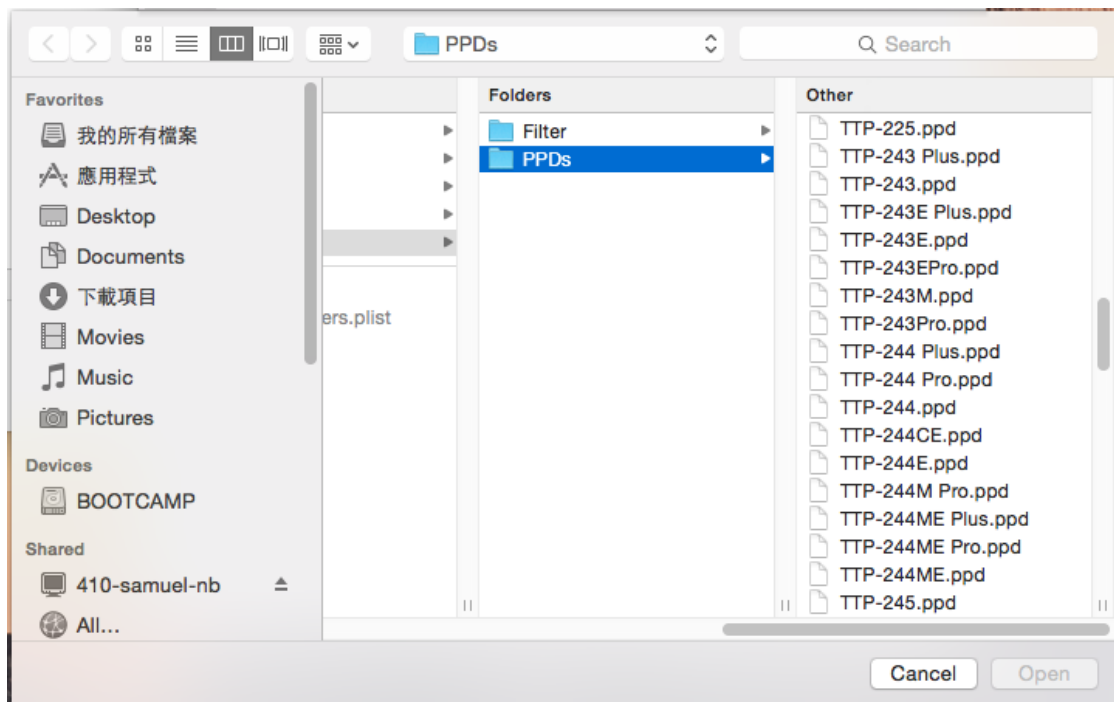
8. Click the Add Printer or Scanner...



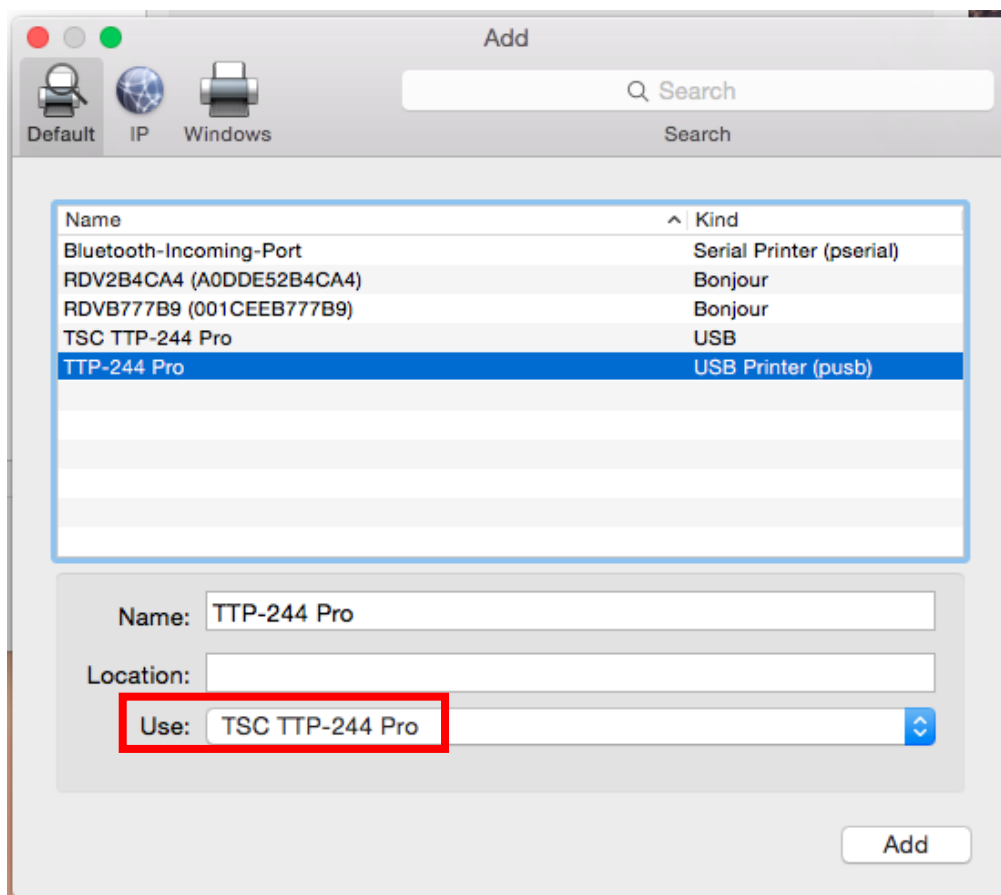
9. Connect printer to MAC computer thru USB. Select the printer model name. Select the "Other..." under the "Use" drop down menu.



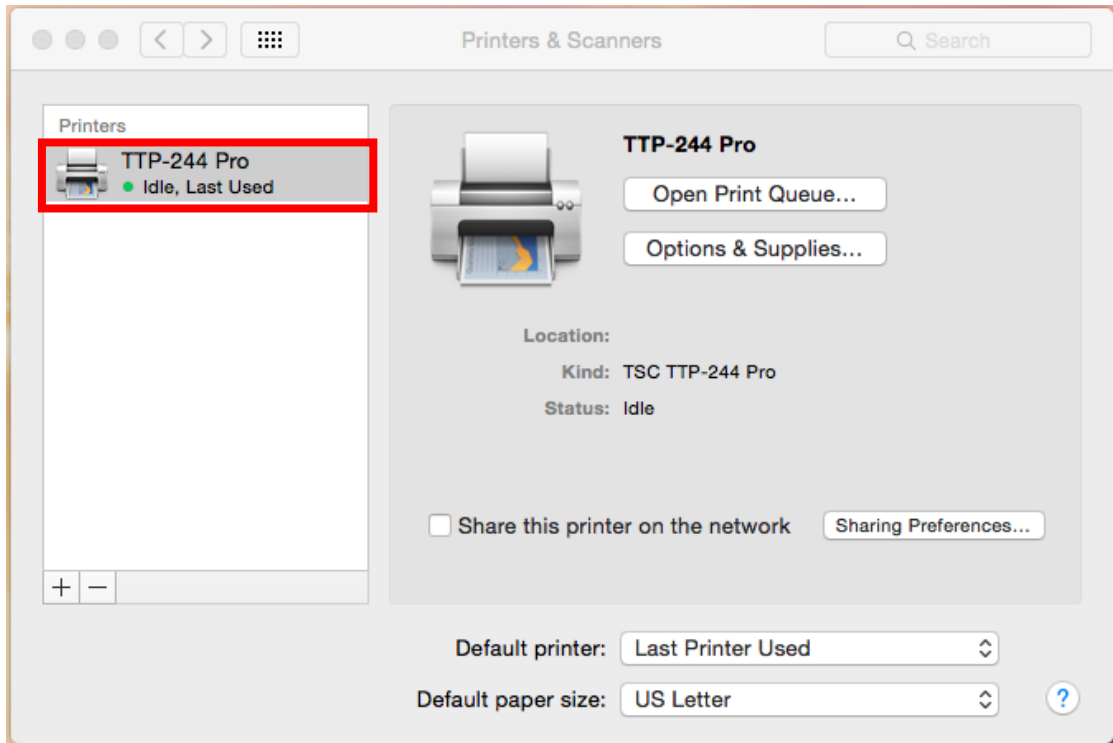
10. Scroll the Other folder to find and select the printer.



11. Click the Add button to install the MAC driver.

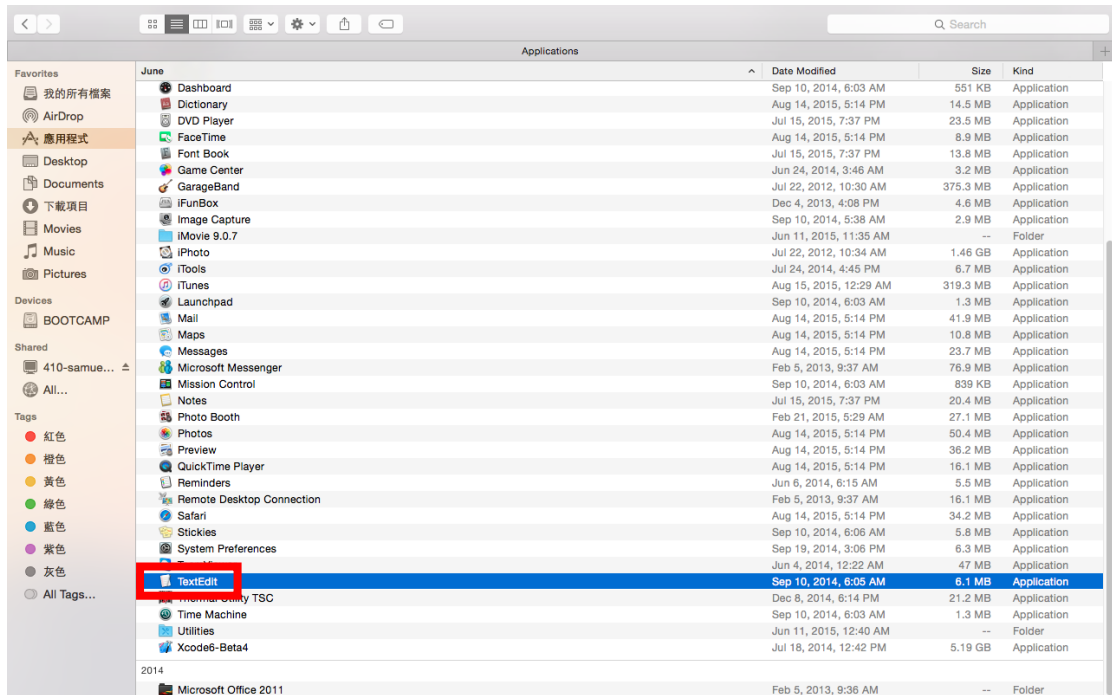


12. Done.

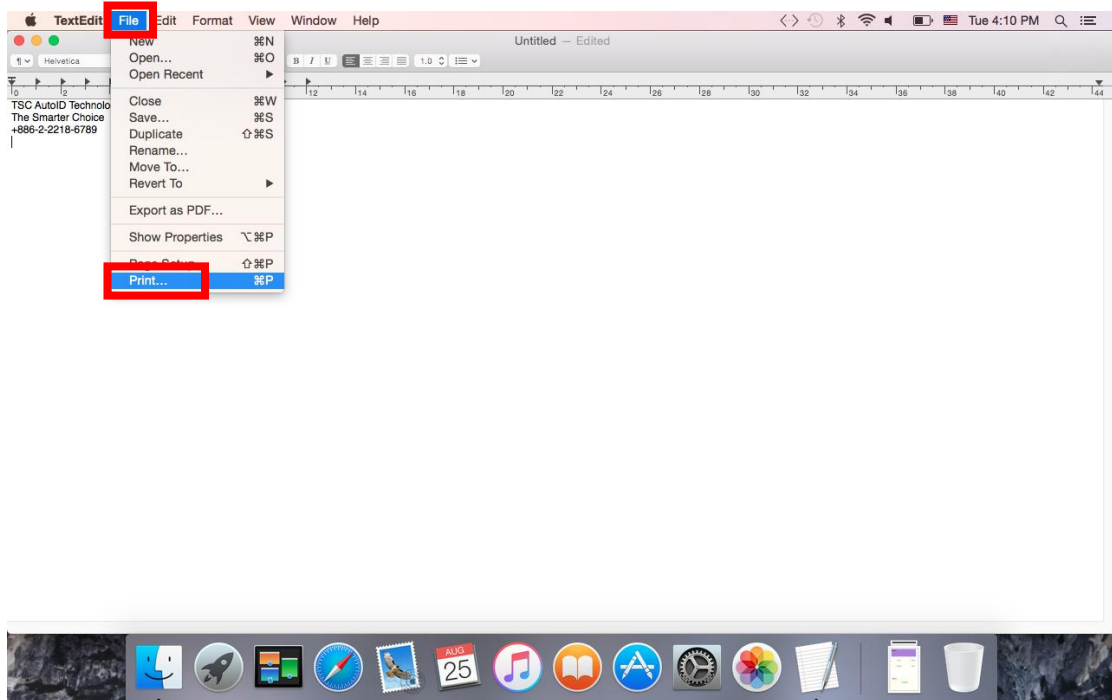


How to Setup the Settings in the Driver (TextEdit)

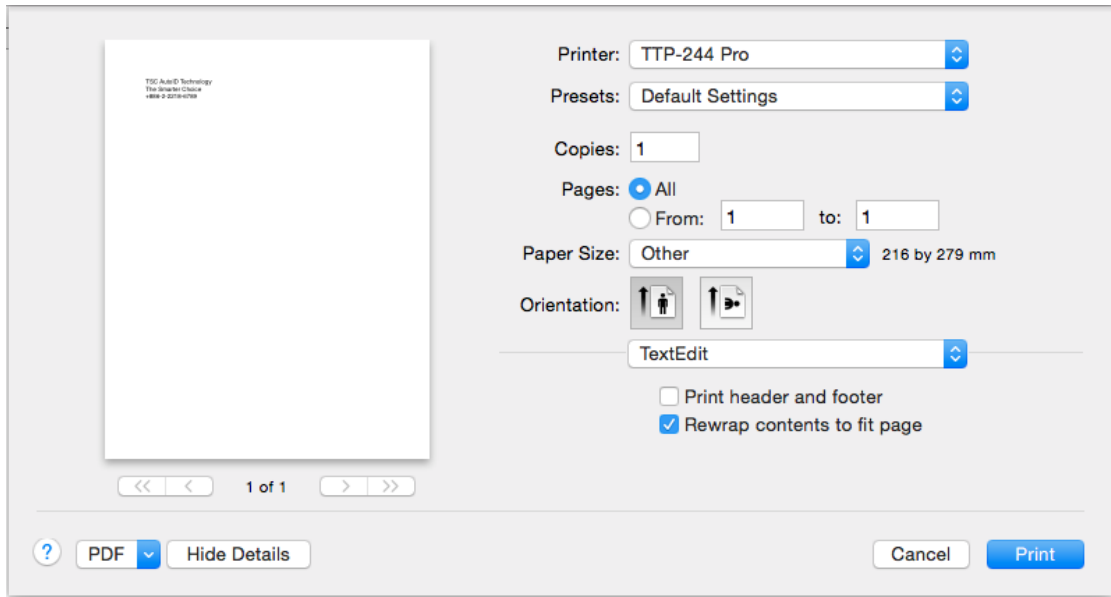
1. Double Click the TextEdit application.



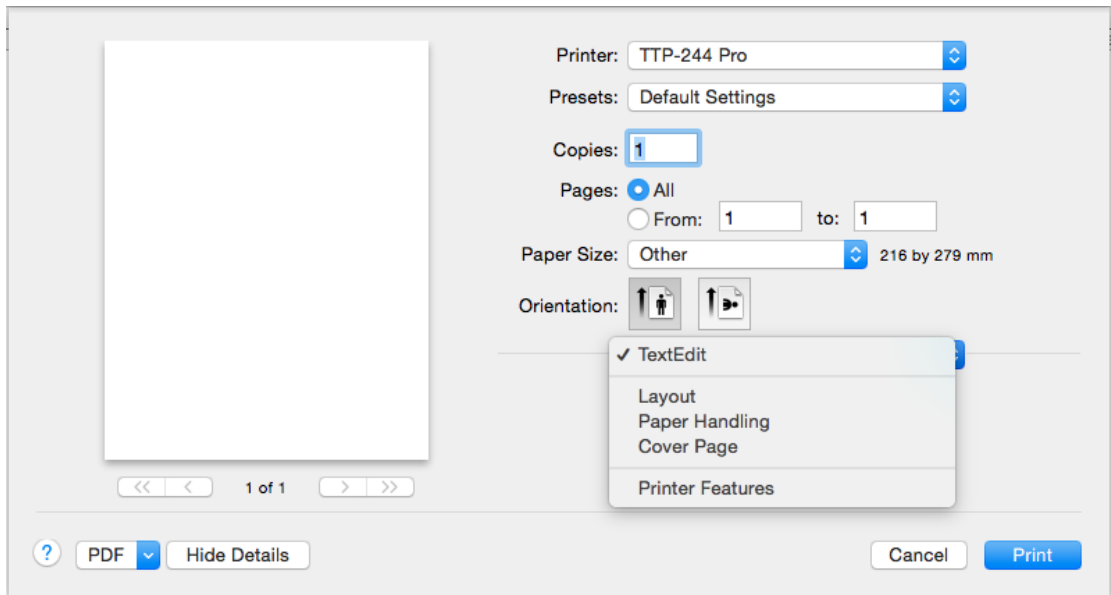
2. Select File\Print.



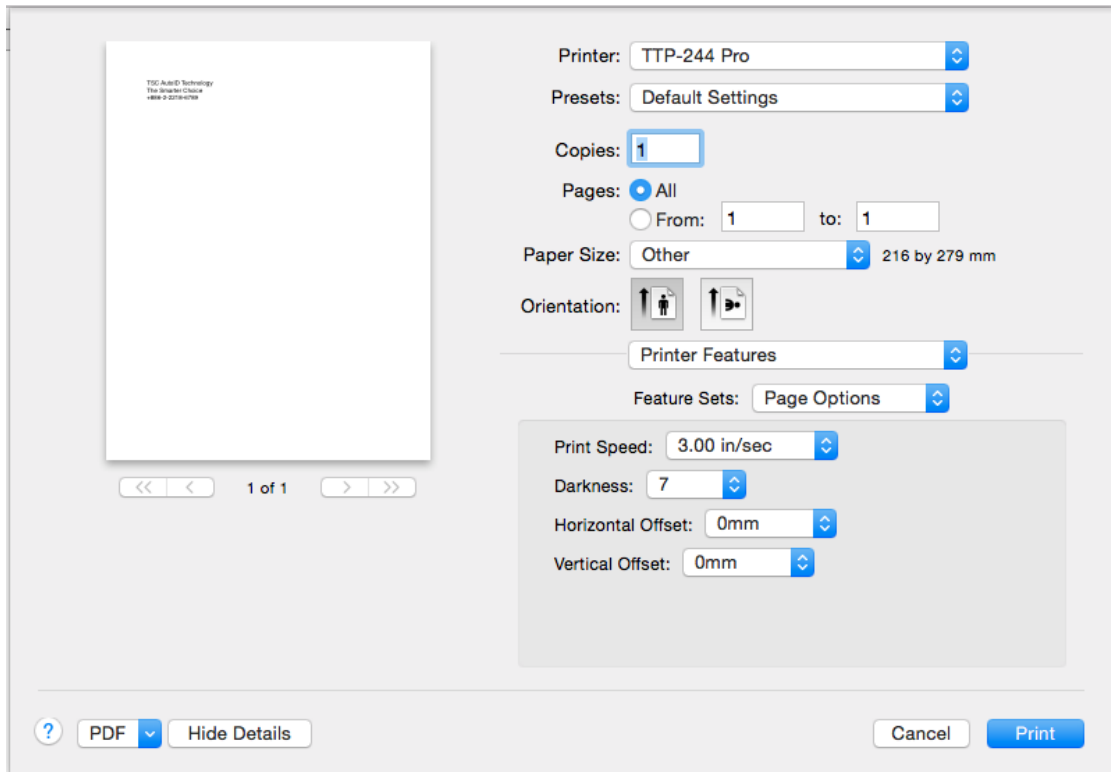
3. The TextEdit screen.



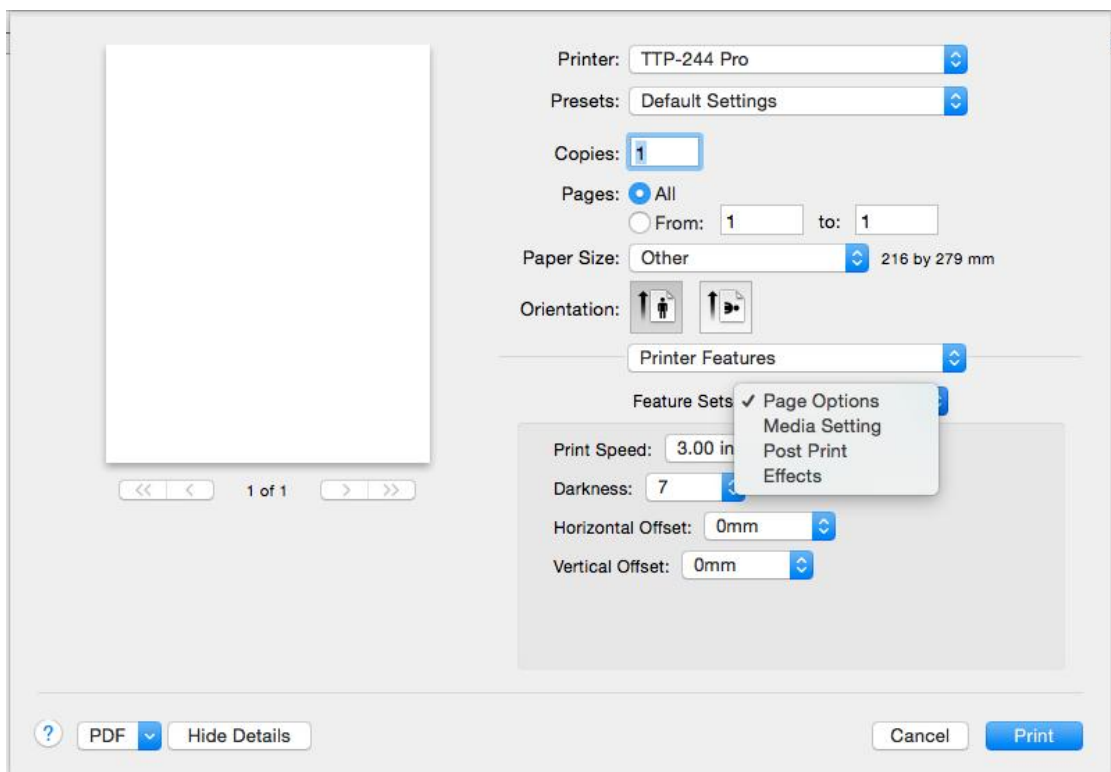
4. Change the TextEdit to the Printer Features under the drop down menu.



5. The Page Options settings.



6. Change the Page Options to the Media Setting under the "Feature Sets" drop down menu.



7. The Media Setting settings.

The screenshot shows a printer settings dialog for a TTP-244 Pro printer. On the left is a preview of a document page with the text "TTP-244 Pro Technology The Smarter Choice www.tsc.com/usa". Below the preview are navigation arrows and "1 of 1". The right side contains various settings: Printer (TTP-244 Pro), Presets (Default Settings), Copies (1), Pages (All), Paper Size (Other, 216 by 279 mm), Orientation (Portrait), Printer Features (Media Setting), Feature Sets (Media Setting), Method (Use Currently Printer Setting), Type (Label with Gaps), Gaps Height (0mm), Gaps Offset (0mm), and Vertical Offset (0mm). At the bottom are buttons for PDF, Hide Details, Cancel, and Print.

Printer: TTP-244 Pro

Presets: Default Settings

Copies: 1

Pages: All
 From: 1 to: 1

Paper Size: Other 216 by 279 mm

Orientation:

Printer Features:

Feature Sets: Media Setting

Method: Use Currently Printer Setting

Type: Label with Gaps

Gaps Height: 0mm

Gaps Offset: 0mm

Vertical Offset: 0mm

PDF Hide Details

Cancel Print

8. The Post Print settings.

The screenshot shows the same printer settings dialog as above, but with the Feature Sets set to "Post Print". The settings in the "Post-Print" section are: Post-Print Action (Tear Off), Occurrence (After Every Page), Interval (1), and Feed Offset (0mm). The other settings remain the same as in the previous screenshot.

Printer: TTP-244 Pro

Presets: Default Settings

Copies: 1

Pages: All
 From: 1 to: 1

Paper Size: Other 216 by 279 mm

Orientation:

Printer Features:

Feature Sets: Post Print

Post-Print Action: Tear Off

Occurrence: After Every Page

Interval: 1

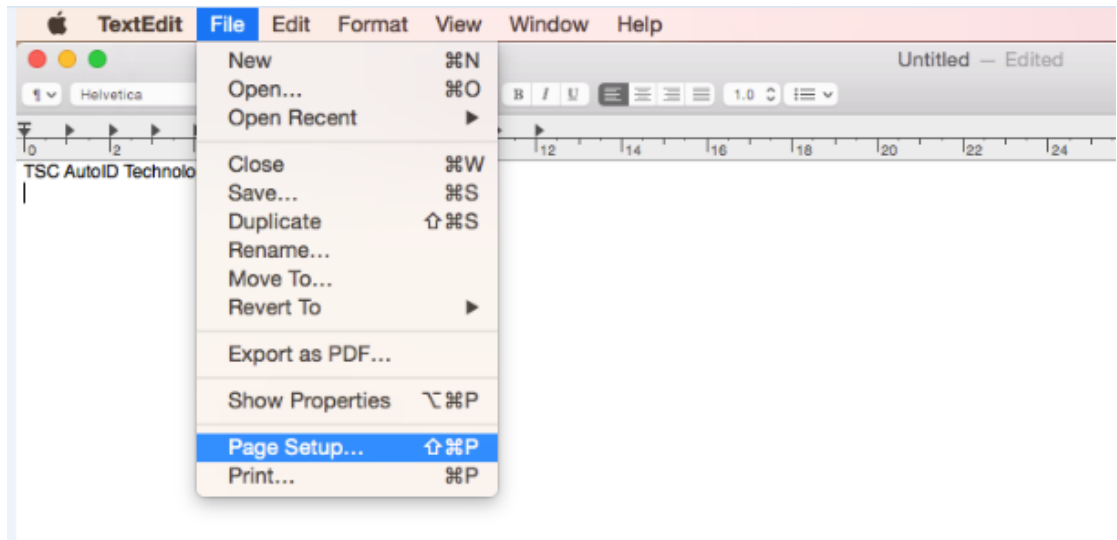
Feed Offset: 0mm

PDF Hide Details

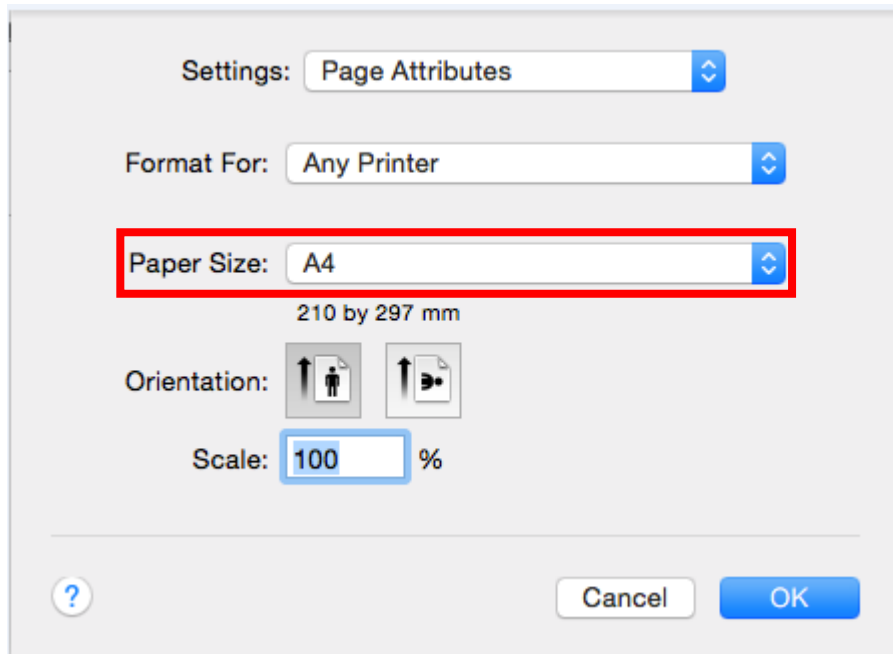
Cancel Print

How to Define a Label Size in the Driver (TextEdit)

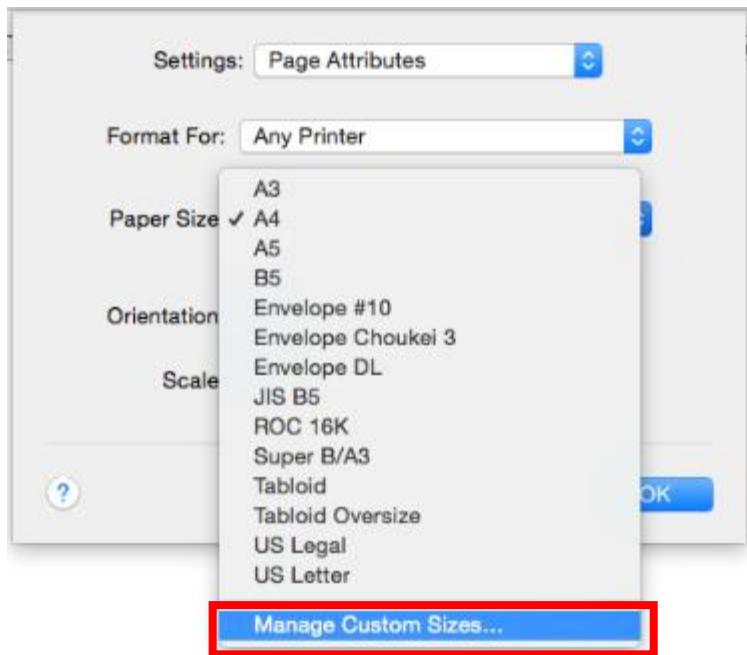
1. Select File\Page Setup



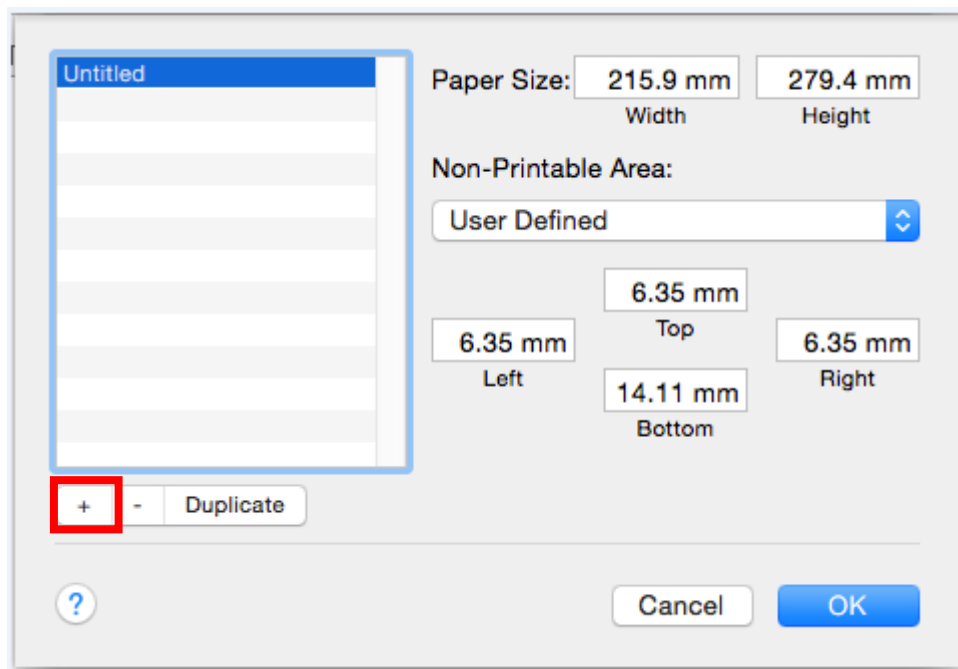
2. The Page Setup screen.



3. Select the Manage Custom Sizes... under the Paper Size drop down menu.



4. Click the Add (+) to define a label size.



5. Press <tab> key, and input a name for the desired label size.

100x50

Paper Size: 215.9 mm Width 279.4 mm Height

Non-Printable Area: User Defined

6.35 mm Top

6.35 mm Left 6.35 mm Right

14.11 mm Bottom

+ - Duplicate

? Cancel OK

6. Press <tab> key, and input the Width of the paper size, repeat the above to fill out all of the desired settings, and click the <OK> button to close it.

100x50

Paper Size: 100 mm Width 50 mm Height

Non-Printable Area: User Defined

0 mm Top

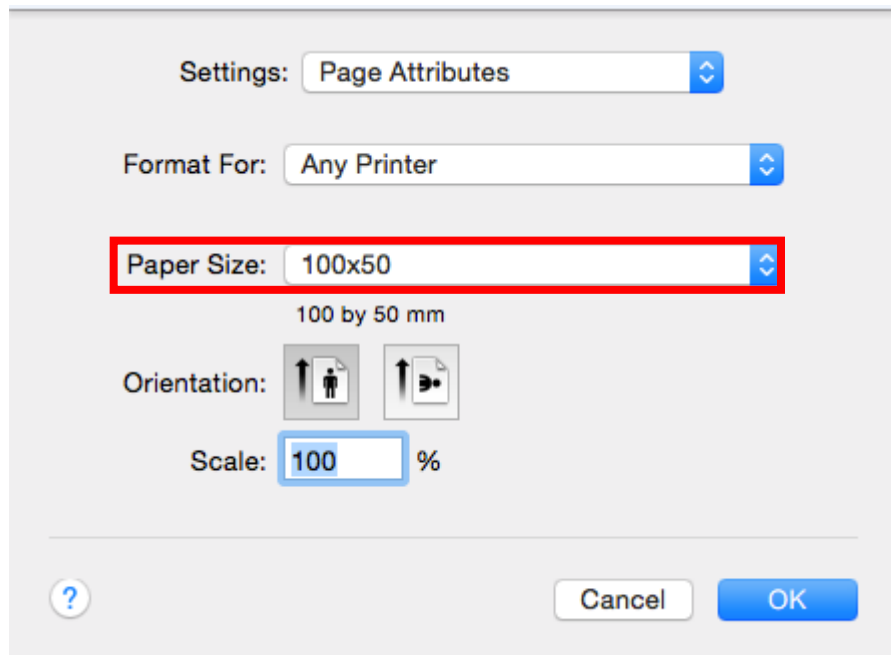
0 mm Left 0 mm Right

0 mm Bottom

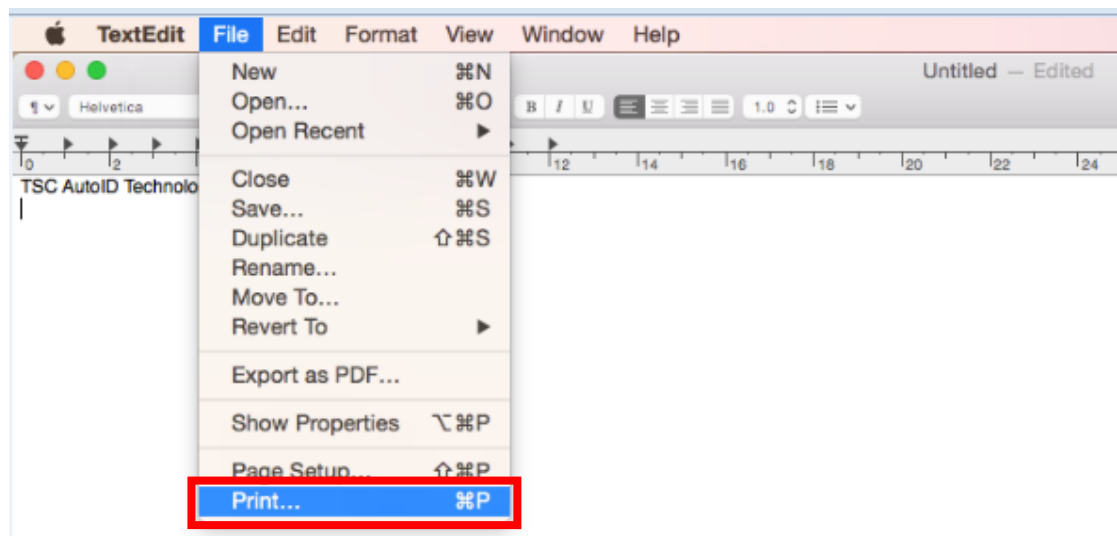
+ - Duplicate

? Cancel OK

- Now the Paper Size will become the just defined one, and press the <OK> button to close it.



- Select File\Print



9. Select the desired label size under the Paper Size drop down menu.

